

**3M** Science.  
Applied to Life.™



Your restorations.  
Your composite.  
Your day.

Universally  
**simpler.**

**3M™ Filtek™**  
**Universal Restorative**

# This is for the devoted... who meet each day head-on.

Most days are nonstop – you barely have time to grab a cup of coffee and review your cases scheduled for the day. And one thing you can count on, is that your day will not go as planned.

But... what if there were a restorative that could help you take charge of your day? What if creating strong, highly aesthetic restorations could be much simpler, and faster?

And... what if that simplicity meant you and your team could feel less stressed... so you'd have more energy for enjoying your life?

You're about to discover how changing just one thing – your composite – can change everything.

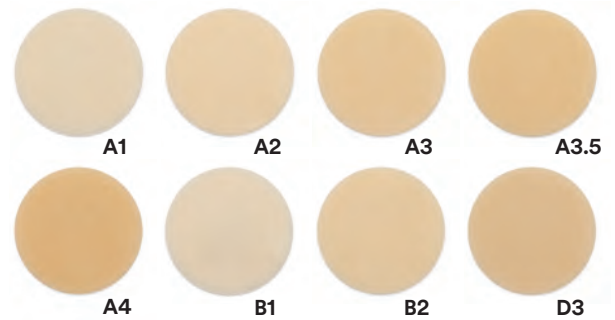




# This is for the passionate, who embrace a busy day.

## Eight designer shades.

3M NaturalMatch technology lets you match most of your patients' dentition with a time-saving, eight shade inventory.



## Plus



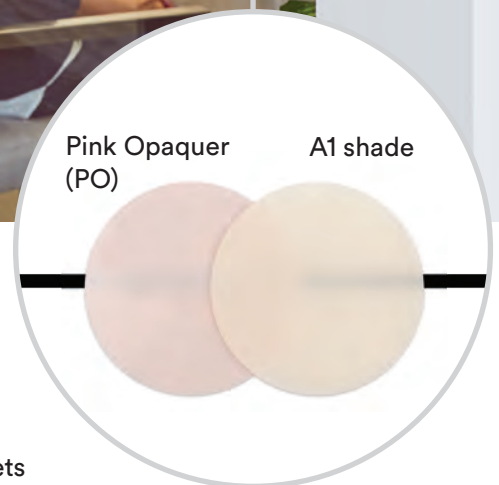
## One shade. One universal opacity. It doesn't get any simpler.

Efficiency is key to navigating a tight schedule. That's one reason dentists use a single-shade restoration for about 80% of their cases.\*

Knowing the positive impact it would have on your practice if those restorations were easier, we created 3M™ Filtek™ Universal Restorative.

It starts with simplifying shade selection. Just eight designer shades plus an Extra White (XW) cover the 19 VITA classical and bleach shades.<sup>1</sup> Plus, the shades have a universal opacity that meets most clinical needs.

- ▶ **NaturalMatch technology** (made up of nanofillers, proprietary low-stress monomers and pigments) enables one-shade aesthetics to blend more naturally with dentition
- ▶ **Fluorescent pigments** enhance the life-like appearance<sup>2</sup>
- ▶ **3M filler technology** allows for increased radiopacity<sup>3</sup>



Now you can keep dark areas from diminishing your aesthetic results. 3M's first Pink Opaquer effectively masks metal and stained dentition.<sup>4</sup>

# It's for patients who take pride in a beautiful smile...



## Extra White restorations for patients who bleach.

The tooth-whitening business continues to expand,\* but dentists tell us it's difficult to find composites that can match the whitest teeth. We answered with an Extra White (XW), to help you meet patient expectations.

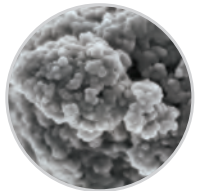


## Shade blending that passes the 'friend test'.

With the unique shade-matching effect of 3M NaturalMatch technology, even anterior work can be virtually unnoticeable – even by close friends. The material's **universal opacity** helps it blend more invisibly with surrounding dentition.

## A glamorous gloss that lasts.

The initial polish of any restorative can be impressive, but many dull over time. Thanks to 3M's patented TRUE nanofiller technology, Filtek Universal restorations polish quickly to a high gloss, and polish.<sup>5</sup>



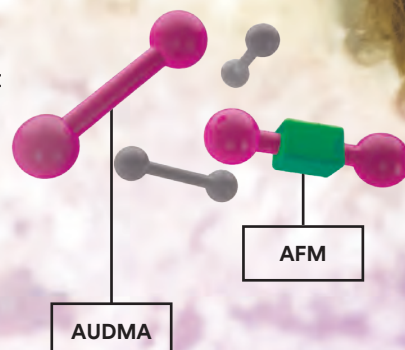
\*Expected size of the global teeth whitening products market by 2024. Hexa Research. (2017, August 17). *Teeth Whitening Products Market Size Worth USD 7.40 Billion By 2024* [Press release]. Retrieved from [www.hexaresearch.com/press-release/global-teeth-whitening-products-market](http://www.hexaresearch.com/press-release/global-teeth-whitening-products-market).

100K magnification of nanocluster. SEM photo courtesy of Dr. J. Perdigão, University of Minnesota.

# and for the bold who say, "Yes!" to life.

## Dual 'endurance' technologies.

Chewing, brushing, grinding, gritting... restorations get quite a workout. We raised the bar on durability by combining two of 3M's top technologies. **Low-stress monomer technologies** pioneered in our bulk-fill composites, help protect against shrinkage and shrinkage stress. **3M's TRUE nanotechnology** provides high strength and excellent wear resistance.<sup>6</sup>





**Even the capsule is designed to make restorations easier.**

Our capsule has a shear thinning design which allows the material to extrude like a flowable – then become more viscous for shaping. The tip is a long 8mm, and the opening flexes during placement – enabling good adaptation in hard to reach areas.



## **This is 3M™ Filtek™ Universal Restorative.**

**It's for all of you who want  
your restorations,  
your composite,  
your day,  
to be universally simpler.**



## Key features

- ▶ **Simplified shade selection** – just eight designer shades to cover most of your patients<sup>1</sup>
- ▶ **Universal opacity** to blend more naturally
- ▶ **Extra White (XW)** for matching bleached teeth
- ▶ **Fluorescent pigments** to give restorations a life-like appearance<sup>2</sup>
- ▶ **Pink Opaquer** to easily mask dark areas<sup>4</sup>
- ▶ **Increased radiopacity** for easier identification at recall<sup>3</sup>
- ▶ **3M's nanotechnology** for easy polish that lasts<sup>5</sup>
- ▶ **Proprietary low-stress monomers** for fracture resistance<sup>6</sup>
- ▶ **Capsule warming** – 3M™ Filtek™ Universal Restorative capsules can be safely warmed.<sup>7</sup>

## Indications

- ▶ Direct anterior and posterior restorations (including occlusal surfaces)
- ▶ Core buildups
- ▶ Splinting
- ▶ Indirect restorations including inlays, onlays and veneers



## Ordering information

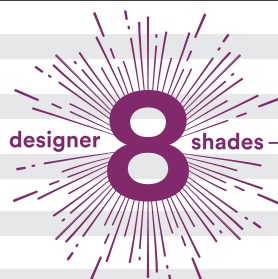
### 3M™ Filtek™ Universal Restorative

Item number Product information

<b>6550CK</b>	<b>3M™ Filtek™ Universal Restorative Essential Kit, Capsules</b> Kit includes: 80 – 0.2g capsules: 20 each of A1, A2, A3, A3.5; 10 – 0.2g capsules of PO; Technique guide; Instructions for use.
<b>6555SK</b>	<b>3M™ Filtek™ Universal Restorative Essential Kit, Syringes</b> Kit includes: 5 – 4g syringes: 1 each of A1, A2, A3, A3.5 and PO; Technique guide; Instructions for use.

Refill	Item number	Item number
Shades	Syringe	Capsule
A1	6555A1	6550A1
A2	6555A2	6550A2
A3	6555A3	6550A3
A3.5	6555A3.5	6550A3.5
A4	6555A4	6550A4
B1	6555B1	6550B1
B2	6555B2	6550B2
D3	6555D3	6550D3
XW—Extra White Bleach	6555XW	6550XW
PO—Pink Opaquer	6555PO	6550PO
Shade Refill	Capsules – includes 20 – 0.2g capsules	Syringes – includes 1 – 4g syringe
Pink Opaquer (PO) Refill	Capsules – includes 10 – 0.2g capsules	Syringes – includes 1 – 4g syringe

All refills include a Technique guide and Instructions for use.



1 3M Oral Care Internal data, 3M™ Filtek™ Universal has 9 available shades (A1, A2, A3, A3.5, A4, B1, B2, D3, XW) which demonstrate (acceptable/good) coverage/shade match to all 19 shades in the VITA shade guide. Claim 7384.

2 3M Oral Care Internal data, Fluorescent pigments. Claim 7378.

3 3M Oral Care Internal data, Radiopacity. Claim 7374.

4 3M Oral Care Internal data, Masking with pink opaquer. Claim 7393.

5 3M Oral Care Internal data, Polish. Claim 7349.

6 3M Oral Care Internal data, Monomer technology. Claim 7394.

7 3M Oral Care Internal data, Capsule Warming. Claim 7401.

**3M.co.uk/dental**

**0800 626 578**

**OralCareUK@mmm.com**

**@3MOralCareUK**

**3M Oral Care**  
**3M United Kingdom PLC**  
 Charnwood Campus  
 10 Bakewell Road  
 Loughborough  
 Leicestershire  
 LE11 5RB  
 0800 626 578

**3M Ireland Ltd**  
 The Iveagh Building  
 The Park, Carrickmines  
 Dublin  
 D18 X015  
 Ireland  
 +353 (0)1280 3555

J455088.

3M and Filtek are trademarks of the 3M company.  
 © 3M 2019. All rights reserved.

