



# Well-Root ST Premixed Bioceramic Sealer

## CLINICAL GUIDELINE

Convenient premixed ready-to-use biocompatible calcium silicate paste developed for permanent root canal obturation with excellent physical properties.

**Head Office / Factory**  
48, Toegyegongdan 1-gil, Chuncheon-si, Gangwon-do, Korea

**Sales Office / R&D Center**  
15, Jeonpa-ro 62beon-gil, Manan-gu, Anyang-si, Gyeonggi-do 14086, Korea  
Tel +82-31-441-2881 Fax +82-31-441-2883 Website [www.vericom.co.kr](http://www.vericom.co.kr)  
Email [vericom@vericom.co.kr](mailto:vericom@vericom.co.kr) / [overseas@vericomdental.com](mailto:overseas@vericomdental.com)

Date of issue 2023.12.12 Clinical Guideline\_ENG\_Rev.3

# Well-Root ST Clinical Guideline



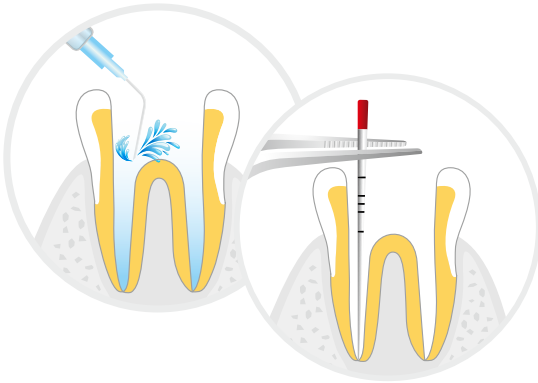
Step 1

## Preparing the root canal

Shape and thoroughly disinfect the root canal system after access cavity preparation.

## Root canal dryness

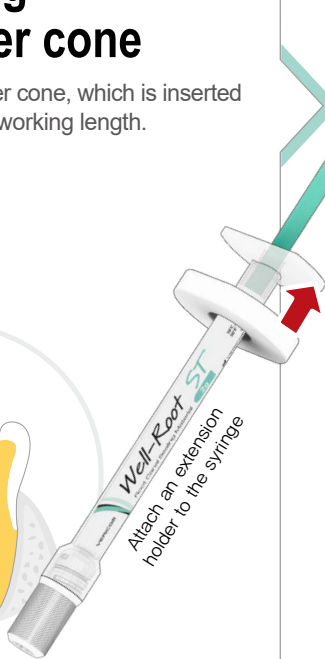
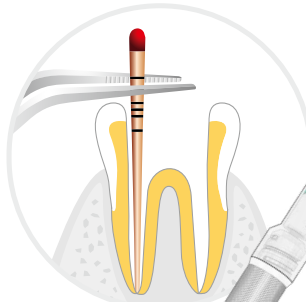
Dry either using the intra-canal suction method or paper point.



Step 2

## Selecting of master cone

Select the master cone, which is inserted smoothly to the working length.

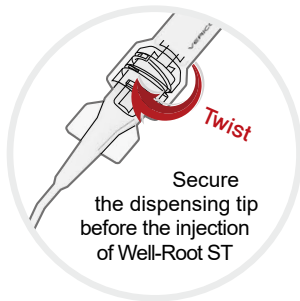


Step 3

## Tip lock and flow check

Connect the provided luer lock dispensing tip to the syringe in place for increased safety, ease of use, and reduced risk of cross-contamination.

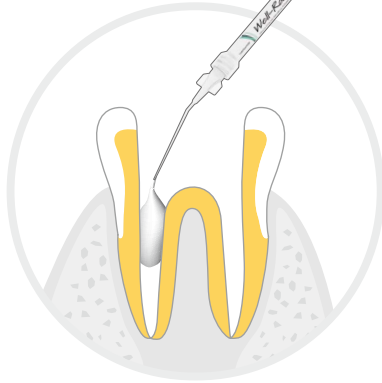
*Well-Root ST tips are flexible and can be bent to facilitate access to the root canal.*



Step 4

## Injecting Well-Root ST

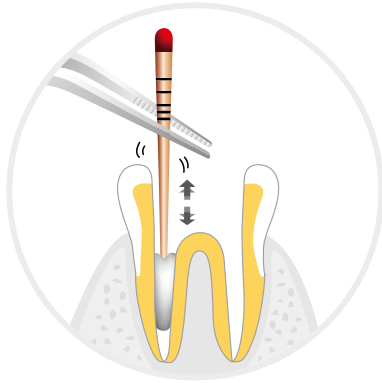
Insert the tip into the root canal and push the plunger slowly to inject well.



Step 5

## Inserting master cone

Coat the master cone first with Well-Root ST, then slowly insert to the entire working length.

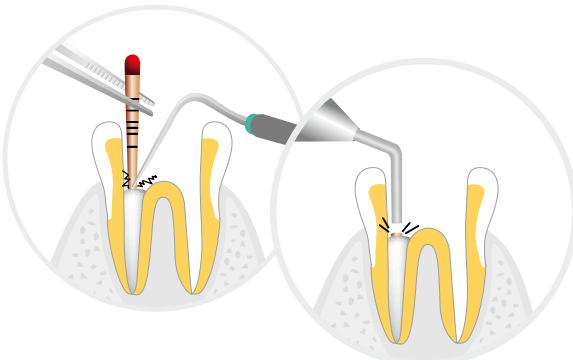


Step 6

## Obturation

Sear off the Gutta-percha at the orifice level and apply some vertical condensation using a hand plugger.

*Remove excess sealer using ultrasonic and water or a moist cotton ball.*



## Well-Root ST Clinical CASE

### Case 01

Dr. Choi/Pastel Dental Clinic\_South Korea

The patient's symptoms have improved a lot, and the result after the treatment seems good, as shown in the F/U photo after 2 years and 7 months.



### Case 02

Dr. Mina Moheb\_Egypt

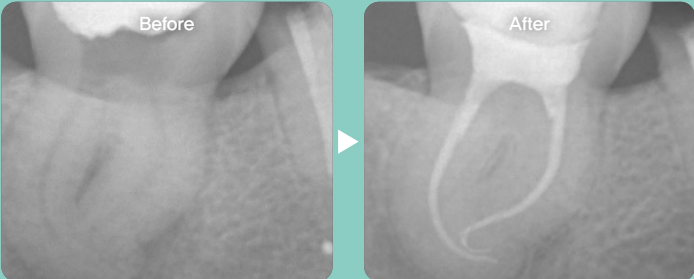
Conservative shaping (Upper first molar with 3 narrow lateral canals) 1-year F/U shows tiny lateral canals still filled with sealer Well-Root ST.



### Case 03

Dr. Walter Vargas Obando\_Costa Rica

It was very successful in using a bioceramic sealer for adequate obturation of the very curvy canals. With the continuous wave technique, you can't properly do the downpack despite the thinner electric plugger you use in this case.



### Case 04

Dr. Johnny Alberto Onori\_Spain

Symptomatic irreversible pulpitis with normal apical tissue.



## FAQ

### 1 What is the setting time?

Well-Root ST will be set by reacting with moisture remaining in the root canal when applied inside of it.

- Initial setting time : 25min,
- Full setting time : 150min

### 4 What if discoloration occurs?

Well-Root ST does not cause discoloration because it does not contain bismuth oxide, which causes discoloration.

### 7 Can it be used in Perforation Case?

Well-Root ST is a bioceramic sealer with flowability, so it is improper to use in perforation cases. To manage perforations, we recommend to use Well-Root PT.

### 2 Isn't the tip clogged?

The particles of Well-Root ST are uniformly mixed throughout and very low reactivity with moisture in the air. Because of this, it is not clogged unless it is left for a long time and does not come in direct contact with the moisture. Please use the disposable tip for the purpose of sanitation and infection control.

### 5 Is it easy to remove when retreated?

Removal method is same as the one with Gutta Percha. Since the bonding strength between the root canal wall and the Well-Root ST is not stronger than that of the Well-Root ST and dentin itself, you can remove it using files, instrument and etc.

### 8 Which is the most adequate (alcohol, NaOCl, distilled water) substance for the final irrigant?

Distilled water has to be used for the final rinsing because NaOCl may change the property, which will affect the setting.

### 3 Can I use other tips besides the enclosed tips?

You may use other tips as well. However, tip clogging may occur depending on the gauge or tip shape, so we recommend you to use the tip provided in the package. When using different tips, do not use a tip with a smaller diameter than the tip provided.

### 6 When performing Continuous Wave Technique, Can we use Well-Root ST?

Yes it can be used because the chemical structure of the material does not change due to the heat generated by the equipment when filling the root canal with CWT. However, for our safety measures & convenient care, it is highly recommended that Well-Root ST be used in accordance with the applicable guidelines.

### 9 Is it necessary to dry all the canals?

No, it is important not to dry the canal completely because the moisture is required for the sealer to complete the setting.